



Tech Specs and Plans

EDIFICIO
CONNECTA

Where wellbeing and technology meet

THE PROJECT IN DETAIL

All the spaces in the CONNECTA Building have been renovated with high-quality, low environmental impact materials that include the latest advances to offer users a unique experience.

Technical installations

- Building air conditioning will be controlled by a VRF system with heat pump and air cooling for heat recovery. These systems are able to provide cooling and heat at the same time. Heating is practically free of charge (in office use) because heat is transferred from areas requiring cooling to areas that need heating.
- Improved air quality through high-efficiency filters.
- The building will be equipped with a customer substation, thus making it possible to choose medium voltage and optimize electricity costs.
- LED lighting with DALI dimming system.
- Building management system (BMS) for complete control of building installations, including utilities consumption monitoring (lighting, electric power, air conditioning, hot water, etc).
- The building will be equipped with a state-of-the-art access control and video surveillance system.
- Occupancy ratio of 1:8.

Façade

- In general, the façade will be a stick curtain wall system with a second skin made of extruded aluminium pilasters and connection gaps in the floor slabs to improve the building's appearance and provide protection from the effects of the sun.
- The main communication area is clad with a ventilated façade of perforated aluminium panels, including a system of frames to illuminate and ventilate the different areas containing telecommunication servers.

Green spaces

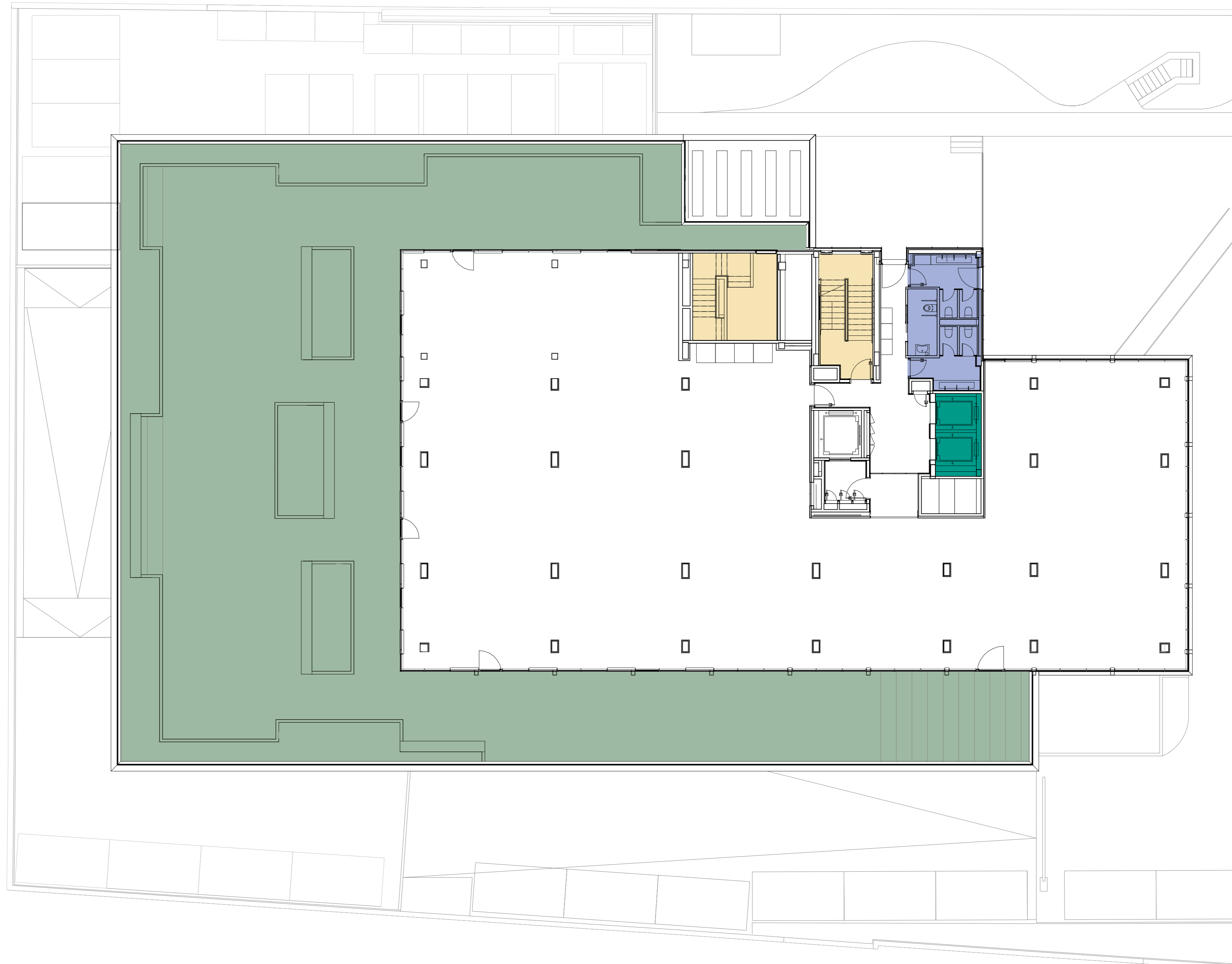


In contact with nature

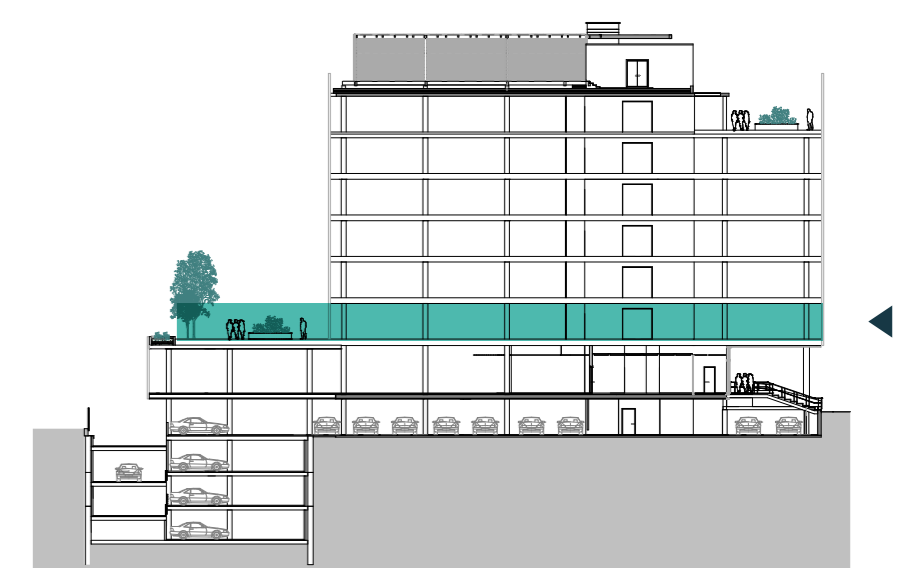


865.8 sqm

FLOOR 1

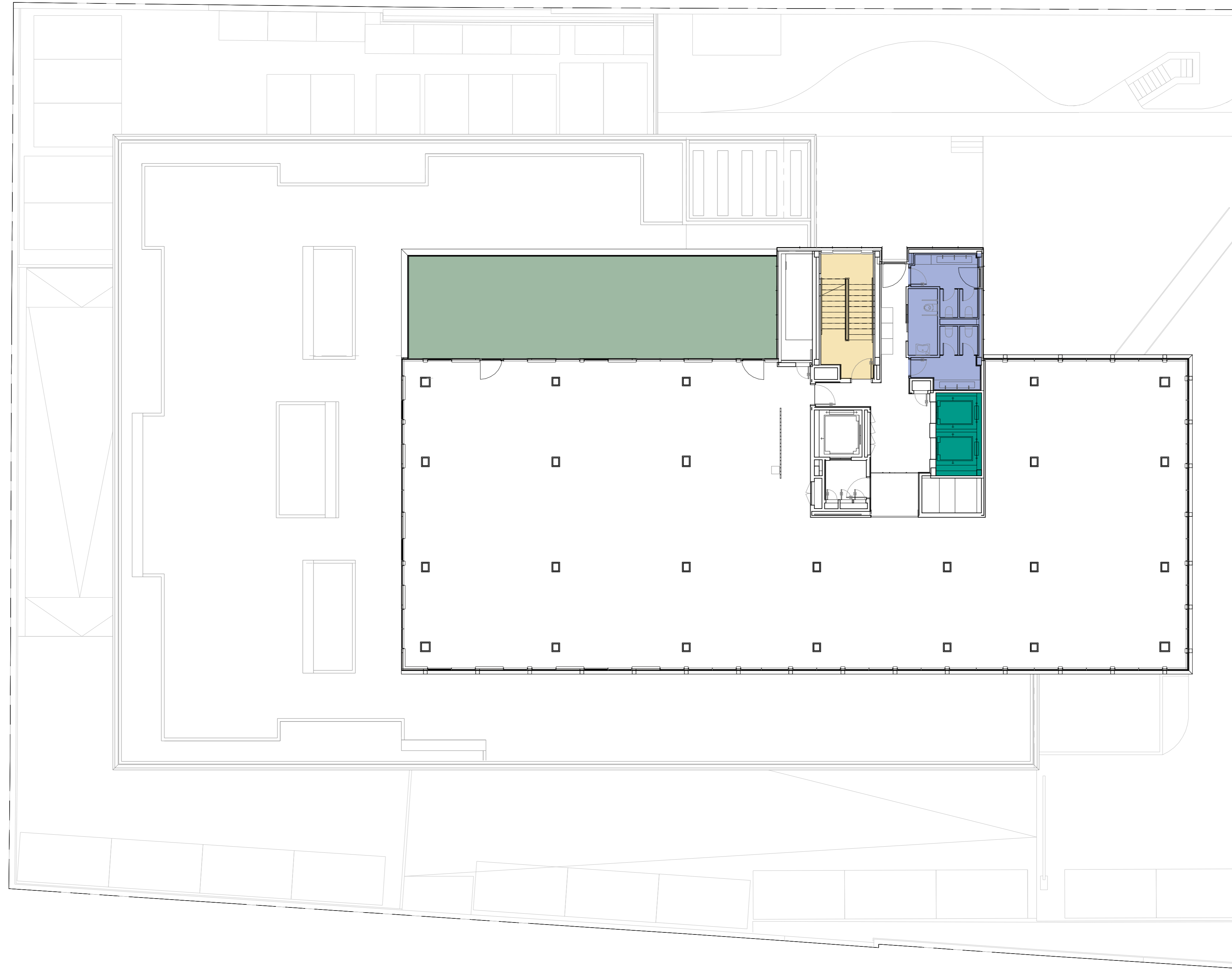


-  Terrace
-  WC
-  Stairs
-  Lifts



754.8 sqm

FLOOR 4

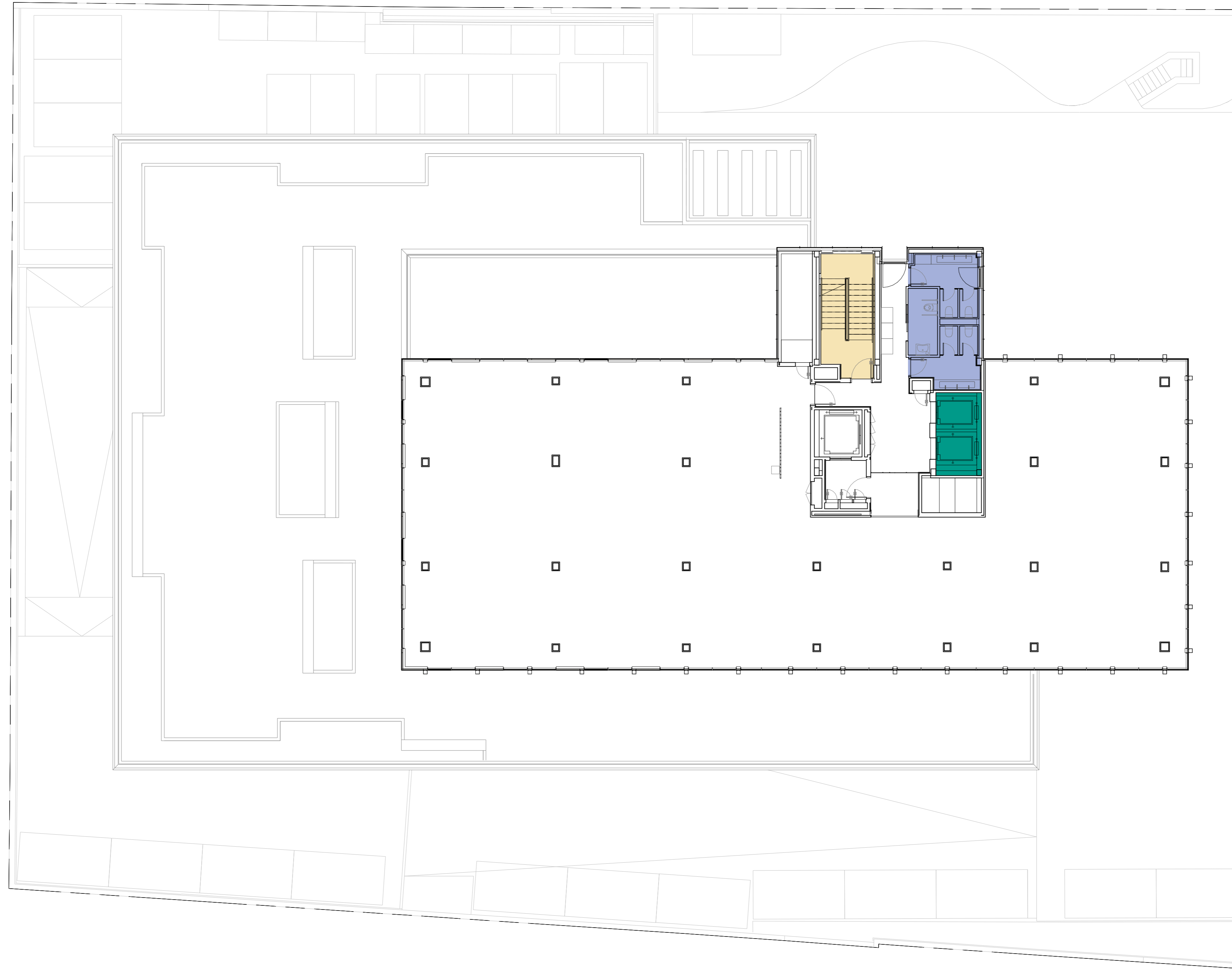


-  Terrace
-  WC
-  Stairs
-  Lifts

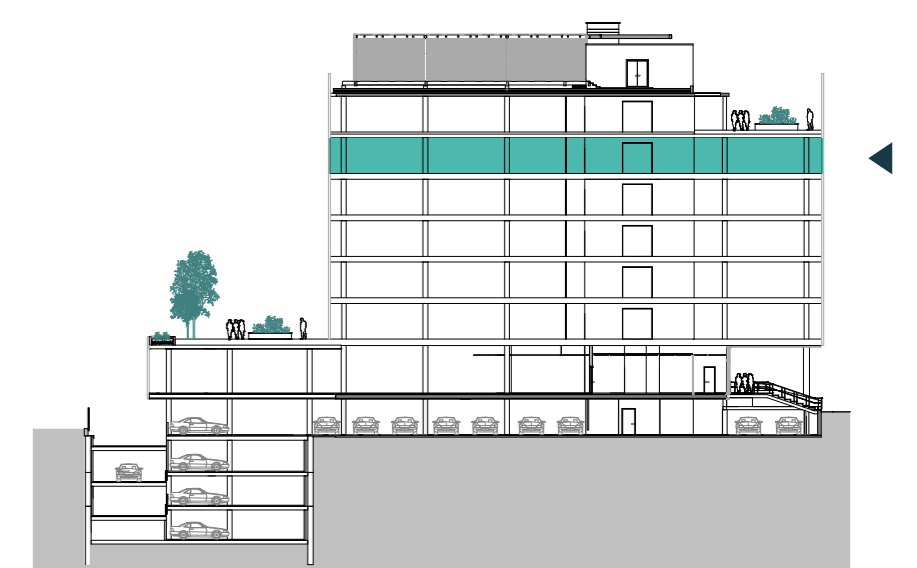


754.8 sqm

FLOOR 5



WC Stairs Lifts



EDIFICIO
CONNECTA

Josefa Valcárcel 24, Madrid